





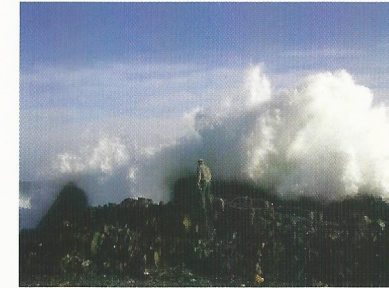


KEY TO MAP

WHITE		Boundaries & Beacons
White		Housing Estate tar roads
YELLOW		Hiking trails
GREEN		Conservation/fire tracks
RED		Primary fire breaks
Red		Fire access paths



Start hiking trail
Water hole

Main entrance gate to the housing estate.
Artesian well feeds this hole - seasonal rise and fall of water - Typha (bullrush) reeds.

Old quarry
P1 to Long pan

Used for road fill during construction of R27
Pans with seasonal water during winter high water table

HIKING ROUTES

Route 1	3km	Start at Conservation Centre, follow route to Pan 7. Take left route returning to Conservation Centre
Route 2	7km	Start at Conservation Centre, follow route to Long Pan, west to Skuinsrots, along Oystercatcher trail to Kabeljoubank and back to Conservation Centre via the gate house.
Route 3	9km	Start at Conservation Centre, follow route to Long Pan, to old river road, west to River mouth, south along Oystercatcher trail to Kabeljoubank and back to Conservation Centre.
Route 4	13km	Start at Conservation Centre, follow route to Long Pan, to old river road, turn east to perimeter fence, north to centre of river at bridge, west up the hills to dune (highest point), south to river mouth and continue along Oyster Catcher trail to Kabeljoubank and back to Conservation Centre.



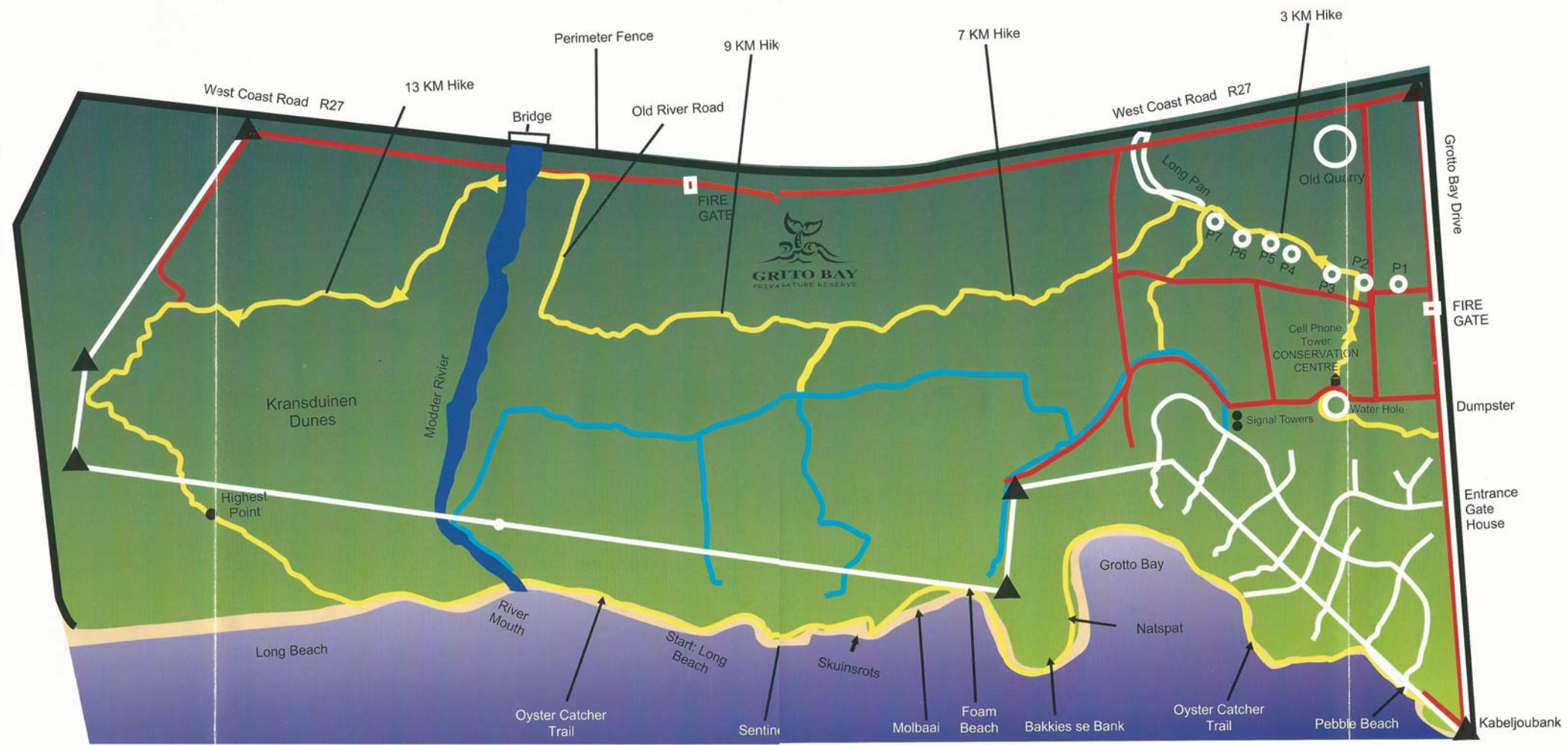
Cape Sand Frog



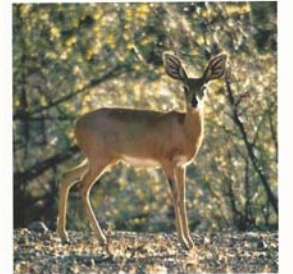
Cape Cobra



Angulate Tortoise



-  Boundary & Beacons
-  Hiking Trails
-  Conservation Fire Tracks
-  Fire Breaks



Steenbok



Porcupine



Small Grey Mongoose

Wildlife species to be found at Grotto Bay Private Nature Reserve

Mammals

Caracal
 African Wild Cat
 Black Backed Jackal
 Small Spotted Genet
 Cape Grysbok
 Common Duiker
 Steenbok
 Rock Dassie
 Porcupine
 Honey Badger
 Small Grey Mongoose
 Water Mongoose
 Cape Clawless Otter
 Cape Dune Molerat
 Common Molerat
 Brants Whistling Rat
 Vlei Rat
 Striped Mouse

Amphibians

Cape River Frog
 Cape Sand Frog
 Cape Chirping Frog
 Banded Stream Frog

Reptiles

Angulate Tortoise
 Cape Cobra
 Boomslang
 Skaapsteker
 Rhombic Egg Eater
 Mole Snake
 Common Brown Water Snake
 Spotted Brown Harlequin Snake
 Common Slugeater
 Cape Legless Skink
 Red-sided Skink
 Cape Skink
 Round Headed Worm Lizard

Invertebrates

Black & Yellow Orb-web Spider
 Velvet Spider
 Rain Spider
 Milkweed Locust
 Metallic Longhorn Beetle
 Obese Lily Beetle
 Giant Cockroach
 Citrus Swallowtail
 Fynbos Blue
 Painted Lady
 Cape Autumn Widow
 Cape Honeybee
 Cocktail Ants
 Blackmound Termites

Birds

African Black Harrier (END)
 * Black Harrier
 Sacred Ibis
 Speckled Rock Pigeon
 * Speckled Pigeon
 Cape Turtle Dove
 Namaqua Dove
 Grey-winged Francolin
 Cape Francolin
 * Cape Spurfowl
 Common Quail
 Crowned Plover
 * Crowned Lapwing
 Spotted Dikkop
 *Spotted Thick-knee
 White-backed Mousebird
 Speckled Mousebird
 European Bee Eater
 Cape Bulbul
 Cape Robin-Chat
 Karoo Scrub-Robin
 Bar Throated Apalis
 Long-billed Crombec
 Grey-backed Cisticola
 Levillant's Cisticola
 Karoo Spotted Prinia
 Cape Wagtail
 Common Fiscal Shrike
 Bokmakierie
 Cape Sugarbird
 Malachite Sunbird
 Orange-breasted Sunbird
 Dusky Sunbird
 Ostrich
 Cape White-eye
 Common Waxbil

Birds

Cape Weaver
 Yellow Rumped Bishop
 Southern Red Bishop
 Black-headed Heron
 Steppe Buzzard
 Lesser Kestrel
 Black-shouldered Kite
 Yellow-billed Kite
 Barn Owl
 Black Korhaan
 Diderick Cuckoo
 Hoopoe
 *African Hoopoe
 European Swallow
 Orange-throated Longclaw
 *Cape Longclaw
 Banded Sand Martin
 Pied Crow
 Neddicky
 Fairy Warbler
 European Starling
 *Common Starling
 Pied Starling
 House Sparrow
 Cape Sparrow
 Pin-tailed Whydah
 Cape Canary
 Yellow Canary
 Larklike Bunting
 Cape Bunting
 Greater Double-collared Sunbird
 Lesser Double-collared Sunbird
 * Southern Double-collared Sunbird
 Chestnut-vented Tit-Babbler

Sea/water Birds

African Black Oystercatcher (END)
 Cape Cormorant
 Kelp Gull
 Hartlaub's Gull
 Common Tern
 White Pelican
 *Great White Pelican
 Turnstone
 *Ruddy Turnstone
 White-fronted Sand Plover
 *White-fronted Plover
 Sanderling
 Common Sandpiper
 *Curlew Sandpiper

**(END) ENDANGERED
 RED DATA LISTED**

*** Denotes birds that have recently
 been renamed.**

**No wildlife is aggressive unless
 provoked or threatened.**

PLEASE NOTE

**It is an offense to disturb, injure,
 capture or remove any Fauna,
 Aviflora or Flora on/from
 Grotto Bay Nature Reserve.**

**Archaeological items, midden findings
 and artefacts of any nature must be
 left undisturbed and may not be
 removed under any circumstances.**

**New findings and sightings, or irregularities
 must be reported to the
 Estate/Conservation Manager immediately.**